

# Audio Tour of HISTORIC WATERVILLE



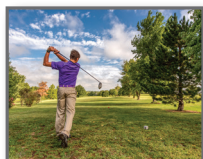
1. Call (785) 879-4093
2. Press the number in paranthesis below, followed by the # sign. (Ex: 23#)
3. Learn more info about each location.
4. Repeat step number 2 at the next location.



**Waterville Overview (4001#)**  
Welcome to historic Waterville.



**Banker's Row (4002#)**  
Three turn of the century Victorian homes built by early-day bankers. Drive by only.



**Waterville Golf Course (4003#)**  
Nine-hole golf course located southeast of town. Open to the public.



**Central Branch Railroad (4004#)**  
Ride on the nearly 12 miles of track in an open car; some of the oldest tracks in Kansas.



**Weaver Hotel (4005#)**  
Built in 1905 and on National Register of Historic Places. Restored and re-opened as a hotel & tourism center.



**Waterville Opera House (4006#)**  
Built in 1903. Restored for community gatherings and arts performances. National Register of Historic Places.



**Waterville Depot Museum (4007#)**  
Museum featuring Waterville history and railroad memorabilia.



**Waterville Library (4008#)**  
Featuring books, magazines, reference and research section.



**Samuel Powell House (4009#)**  
House built in 1895 and on the National Register of Historic Places



**Waterville Mural (4010#)**  
Mural depicting the history of Waterville



**Game Fork School (4011#)**  
Rural school, closed in 1952 and now a designated Scout House Headquarters.



**Waterville City Park (4012#)**  
Park featuring playground equipment, full-sized pool & a covered shelter



**Lipton Ball Field (4013#)**  
Two ballfields with concession stands



**Lake Idlewild (4014#)**  
WPA project from the 1930s, features 2 waterfalls, nestled in a scenic timber along the Little Blue River



**The Adams House (4015#)**  
Built in 1871. Destroyed by fire and rebuilt as the Waterville hospital. Since then has housed various businesses.

*Come back & visit again!*

[www.cityofwatervilleks.org](http://www.cityofwatervilleks.org)

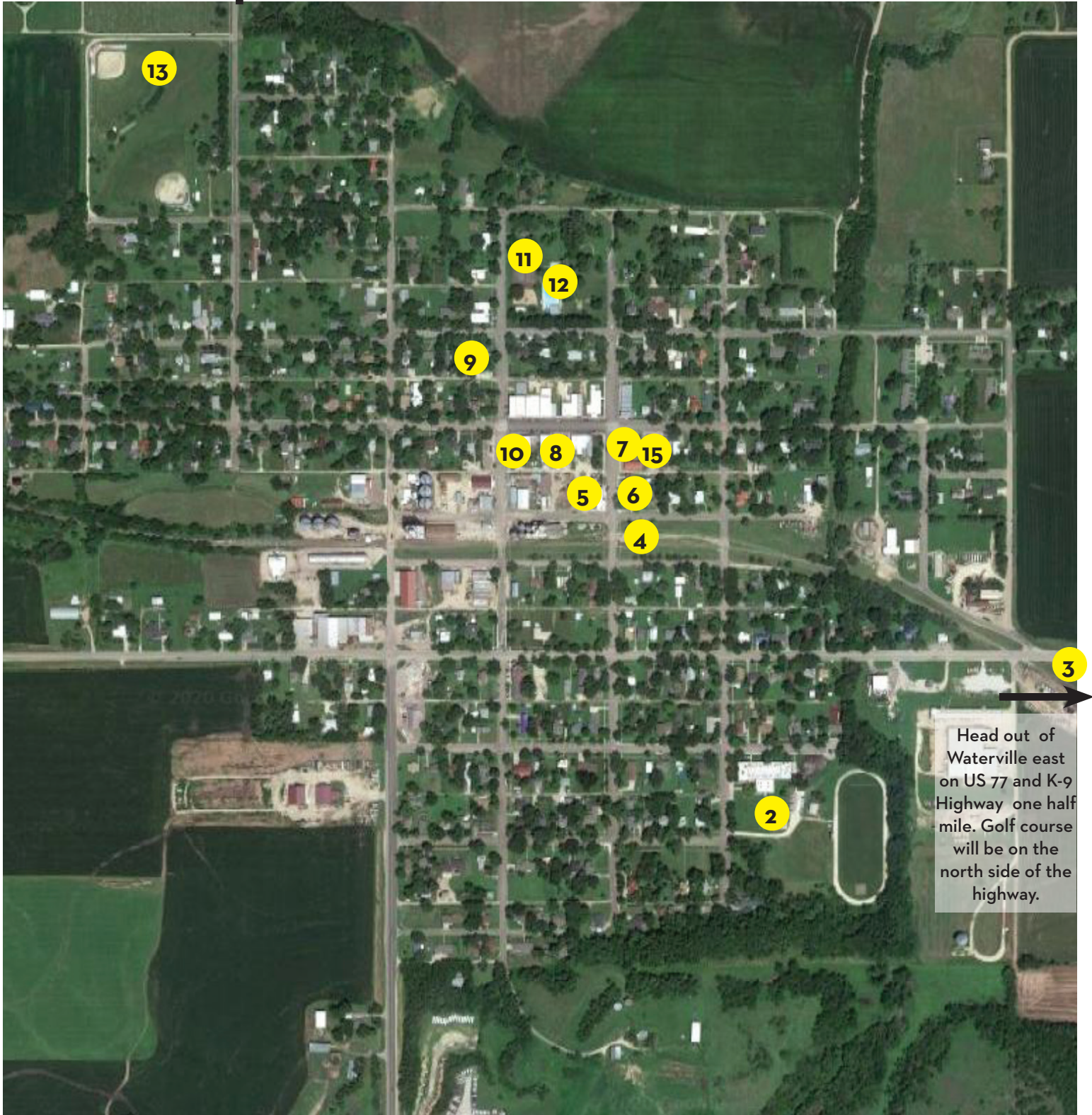


# WATERVILLE MAP



14

Cross Little Blue River to Temple Road.  
Turn right and follow road to Lake Idlewild



3

Head out of  
Waterville east  
on US 77 and K-9  
Highway one half  
mile. Golf course  
will be on the  
north side of the  
highway.